

Data Sheet | Item Number: 709-583

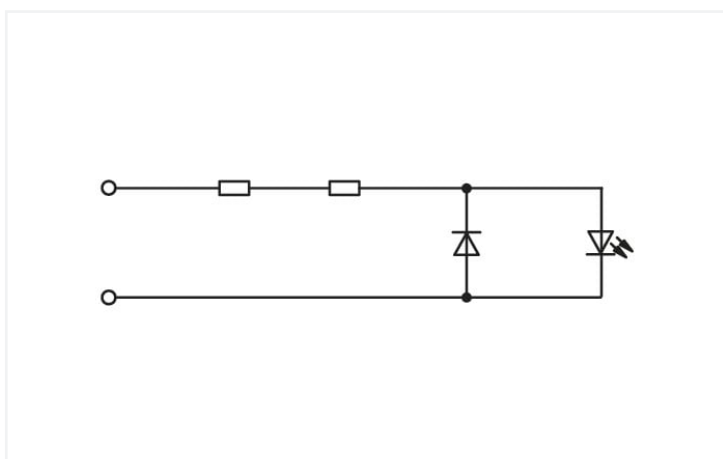
Switchgear cabinet outlet; for DIN-rail and screw mounting; for plug, type F, CEE 7/4 (Schuko); common in DE, NL, AT; with LED status indicator; with Push-in Cage Clamp double connection; red



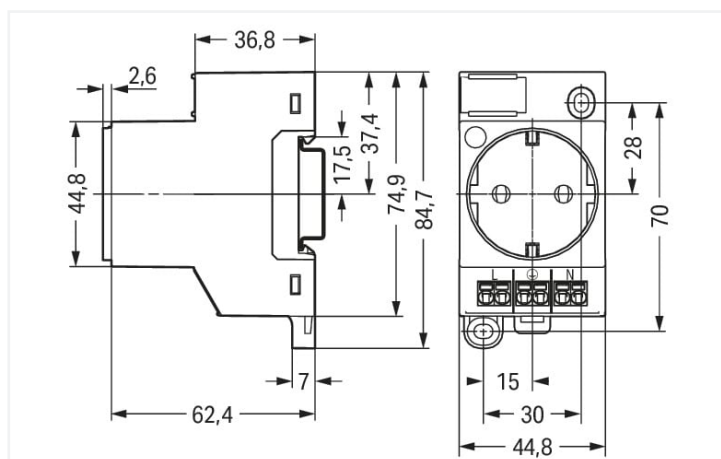
<https://www.wago.com/709-583>



Color: ■ red



Similar to illustration



Dimensions in mm

Notes

| | |
|----------------------|---|
| Safety information | Installation must be performed by a qualified electrician. |
| Safety information 2 | During the insulation resistance test, the active conductors must be connected. The integrated status indicator in the control cabinet outlet must be protected against transient overvoltages. Overvoltage protection in low-voltage systems must be observed. |

Technical data

| | |
|--------------------|--|
| Number of spacings | 3 -times |
| Mounting type | DIN-35 rail |
| Safety information | Installation must be performed by a qualified electrician. |

Electrical data

| | |
|-------------------------|--|
| Power loss P_1 (note) | LED status indication and contact resistance |
| Power loss P_1 (max.) | 1.8 W |
| Rated current | 16 A |

Connection data

| | |
|---|---|
| Connection technology | Push-in CAGE CLAMP® |
| Strip length | 9 ... 10 mm / 0.35 ... 0.39 inches |
| Solid conductor | 0.2 ... 2.5 mm ² / 24 ... 14 AWG |
| Fine-stranded conductor | 0.2 ... 2.5 mm ² / 24 ... 14 AWG |
| Fine-stranded conductor; with insulated ferrule | 2.5 mm ² / 14 AWG |
| Stranded conductor | 0.2 ... 2.5 mm ² / 24 ... 14 AWG |

Physical data

| | |
|------------------------------------|------------------------|
| Width | 45 mm / 1.772 inches |
| Height | 65 mm / 2.559 inches |
| Height from upper-edge of DIN-rail | 59.8 mm / 2.354 inches |
| Height from the surface | 65 mm / 2.559 inches |
| Depth | 84.7 mm / 3.335 inches |

Material data

| | |
|-----------------------------|-----------------------------------|
| Color | red |
| Material group | I |
| Insulation material | Polyamide (PA66) |
| Flammability class per UL94 | V0 |
| Fire load | 0 MJ |
| Contact material | Copper alloy |
| Contact plating | Sn |
| Clamping spring material | Chrome-nickel spring steel (CrNi) |
| Weight | 81.6 g |

| Commercial data | |
|-----------------------|---------------|
| eCl@ss 10.0 | 27-14-23-05 |
| eCl@ss 9.0 | 27-14-23-05 |
| ETIM 8.0 | EC001663 |
| ETIM 7.0 | EC001663 |
| PU (SPU) | 1 pcs |
| Packaging type | Box |
| Country of origin | BG |
| GTIN | 4055143718301 |
| Customs tariff number | 85366990990 |

| Environmental Product Compliance | |
|----------------------------------|-------------------------|
| RoHS Compliance Status | Compliant, No Exemption |

Approvals / Certificates

| General approvals | | | Declarations of conformity and manufacturer's declarations | | |
|--|----------|------------------------|--|----------|------------------|
| | | | | | |
| Approval | Standard | Certificate Name | Approval | Standard | Certificate Name |
| VDE VDE Prüf- und Zertifizierungsinstitut | - | 40047680 (IEC 60884-1) | EU-Declaration of Conformity WAGO GmbH & Co. KG | - | - |
| | | | UK-Declaration of Conformity WAGO GmbH & Co. KG | - | - |

1 Compatible Products

1.1 Optional Accessories

1.1.1 Marking

1.1.1.1 Marker

| | | | |
|---|---|---|--|
| | | | |
| <p>Item No.: 793-5501/000-006 WMB marking card; as card; for terminal block width 5 - 17.5 mm; stretchable 5 - 5.2 mm; plain; snap-on type; blue</p> | <p>Item No.: 793-5501/000-007 WMB marking card; as card; for terminal block width 5 - 17.5 mm; stretchable 5 - 5.2 mm; plain; snap-on type; gray</p> | <p>Item No.: 793-5501/000-023 WMB marking card; as card; for terminal block width 5 - 17.5 mm; stretchable 5 - 5.2 mm; plain; snap-on type; green</p> | <p>Item No.: 793-5501/000-017 WMB marking card; as card; for terminal block width 5 - 17.5 mm; stretchable 5 - 5.2 mm; plain; snap-on type; light green</p> |
| | | | |
| <p>Item No.: 793-5501/000-012 WMB marking card; as card; for terminal block width 5 - 17.5 mm; stretchable 5 - 5.2 mm; plain; snap-on type; orange</p> | <p>Item No.: 793-5501/000-005 WMB marking card; as card; for terminal block width 5 - 17.5 mm; stretchable 5 - 5.2 mm; plain; snap-on type; red</p> | <p>Item No.: 793-5501/000-024 WMB marking card; as card; for terminal block width 5 - 17.5 mm; stretchable 5 - 5.2 mm; plain; snap-on type; violet</p> | <p>Item No.: 793-5501 WMB marking card; as card; for terminal block width 5 - 17.5 mm; stretchable 5 - 5.2 mm; plain; snap-on type; white</p> |
| | | | |
| <p>Item No.: 793-5501/000-002 WMB marking card; as card; for terminal block width 5 - 17.5 mm; stretchable 5 - 5.2 mm; plain; snap-on type; yellow</p> | <p>Item No.: 793-501/000-006 WMB marking card; as card; not stretchable; plain; snap-on type; blue</p> | <p>Item No.: 793-501/000-007 WMB marking card; as card; not stretchable; plain; snap-on type; gray</p> | <p>Item No.: 793-501/000-023 WMB marking card; as card; not stretchable; plain; snap-on type; green</p> |
| | | | |
| <p>Item No.: 793-501/000-017 WMB marking card; as card; not stretchable; plain; snap-on type; light green</p> | <p>Item No.: 793-501/000-012 WMB marking card; as card; not stretchable; plain; snap-on type; orange</p> | <p>Item No.: 793-501/000-005 WMB marking card; as card; not stretchable; plain; snap-on type; red</p> | <p>Item No.: 793-501/000-024 WMB marking card; as card; not stretchable; plain; snap-on type; violet</p> |

1.1.1.1 Marker



Item No.: 793-501

WMB marking card; as card; not stretchable; plain; snap-on type; white

Item No.: 793-501/000-002

WMB marking card; as card; not stretchable; plain; snap-on type; yellow

Item No.: 2009-115/000-006

WMB-Inline; for Smart Printer; 1500 pieces on roll; stretchable 5 - 5.2 mm; plain; snap-on type; blue

Item No.: 2009-115/000-007

WMB-Inline; for Smart Printer; 1500 pieces on roll; stretchable 5 - 5.2 mm; plain; snap-on type; gray



Item No.: 2009-115/000-023

WMB-Inline; for Smart Printer; 1500 pieces on roll; stretchable 5 - 5.2 mm; plain; snap-on type; green

Item No.: 2009-115/000-017

WMB-Inline; for Smart Printer; 1500 pieces on roll; stretchable 5 - 5.2 mm; plain; snap-on type; light green

Item No.: 2009-115/000-012

WMB-Inline; for Smart Printer; 1500 pieces on roll; stretchable 5 - 5.2 mm; plain; snap-on type; orange

Item No.: 2009-115/000-024

WMB-Inline; for Smart Printer; 1500 pieces on roll; stretchable 5 - 5.2 mm; plain; snap-on type; violet



Item No.: 2009-115

WMB-Inline; for Smart Printer; 1500 pieces on roll; stretchable 5 - 5.2 mm; plain; snap-on type; white

Item No.: 2009-115/000-002

WMB-Inline; for Smart Printer; 1500 pieces on roll; stretchable 5 - 5.2 mm; plain; snap-on type; yellow

1.1.1.2 Marking strip



Item No.: 2009-110

Marking strips; for Smart Printer; on reel; not stretchable; plain; snap-on type; white