



F&F Filipowski sp. j.  
ul. Konstantynowska 79/81  
95-200 Pabianice POLAND  
tel/fax 42-2152383, 2270971  
e-mail: fif@fif.com.pl

## AS-222T

### STAIRCASE TIMERS



www.fif.com.pl

Produkty firmy F&F objęte są 24 miesięczną gwarancją od daty zakupu

#### PURPOSE

Staircase timer serves to keep switched-ON lighting of staircase, corridor, or any other object for the set time and to switch-OFF this lighting automatically, upon elapse of this set time.

#### FUNCTIONING

Turned ON staircase timer supports the lighting during set time by potentiometer (from 0,5min. to 10min.) and upon elapse of this set time a reduction by half of lighting brightness follows for about 30 seconds, after that OFF follows (thus an occurrence of a sudden darkness is avoided, enabling safe approach to the switch). After switching OFF the lighting there is possibility to switch it ON again. Function of counter blockade does not allow to keep the light-ON in case of staircase switch blocking (after blocking the pushbutton, for example by match, the timer will count the set time and switch OFF the lighting). Next switching ON can be after removing the blockade.

#### ATTENTION!

The AS-222T is not adapted to co-operate with pushbuttons equipped with neon lamp. The AS-222T is not adapted to co-operate with LED lamps, fluorescent, compact fluorescent or other lamps with electronic starters.

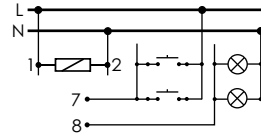
#### ASSEMBLY

1. Take OFF the power.
2. Put on the relay on the rail in switchgear box.
3. Connect the relay to circuitry with wiring diagram.
4. By flat screwdriver set to switching threshold.

#### TECHNICAL DATA

supply	230V AC
current load	<10A
switching OFF delay (to set)	0,5+10m
switching ON delay	<1sec
time of reduced brightness	~30sec
power consumption	0,8W
connection	screw terminals 2,5mm <sup>2</sup>
working temperature	-25+50°C
dimensions	2 modules (35mm)
fixing	on rail TH-35

#### WIRING DIAGRAM



4 wires connection

B111122