

MASTER LEDtube EM/ Mains T8

MASTER LEDtube 1200mm HO 12.5W 830 T8

The Philips MASTER LEDtube integrates a LED light source into a traditional fluorescent form factor. Its unique design creates a perfectly uniform visual appearance which cannot be distinguished from traditional fluorescent. For those that are looking for value for money within limited budget and re-lamping efforts for better light effect and lifetime.

Product data

General Information	
Cap-Base	G13 [Medium Bi-Pin Fluorescent]
RoHS mark	RoHS mark
Nominal Lifetime (Nom)	60000 h
Switching Cycle	200000X
B50L70	60000 h

Light Technical	
Color Code	830 [CCT of 3000K]
Beam Angle (Nom)	160 °
Luminous Flux (Nom)	2000 lm
Luminous Flux (Rated) (Nom)	2000 lm
Rated Beam Angle	160 °
Correlated Color Temperature (Nom)	3000 K
Color Consistency	<6
Color Rendering Index (Nom)	83
LLMF At End Of Nominal Lifetime (Nom)	70 %

Operating and Electrical	
Input Frequency	50 to 60 Hz

Power (Rated) (Nom)	12.5 W
Lamp Current (Max)	59 mA
Lamp Current (Min)	54 mA
Starting Time (Nom)	0.5 s
Warm Up Time to 60% Light (Nom)	0.5 s
Power Factor (Nom)	0.9
Voltage (Nom)	220-240 V

Temperature	
T-Ambient (Max)	45 °C
T-Ambient (Min)	-20 °C
T-Storage (Max)	65 °C
T-Storage (Min)	-40 °C
T-Case Maximum (Nom)	50 °C

Controls and Dimming	
Dimmable	No

Mechanical and Housing	
Bulb Material	Plastic

MASTER LEDtube EM/Mains T8

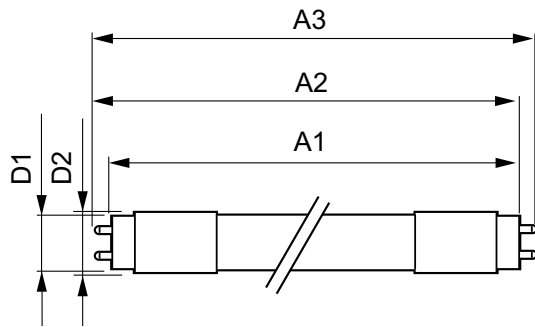
Product Length	1200 mm
Approval and Application	
Energy Efficiency Label (EEL)	A++
Energy Saving Product	Yes
Approval Marks	RoHS compliance TUV CE marking KEMA Keur certificate
Energy Consumption kWh/1000 h	13 kWh
Product Data	
Full product code	871869959235600

Order product name	MASTER LEDtube 1200mm HO 12.5W 830 T8
EAN/UPC - Product	8718699592356
Order code	929001922602
Numerator - Quantity Per Pack	1
Numerator - Packs per outer box	10
Material Nr. (12NC)	929001922602
Net Weight (Piece)	0.250 kg

Warnings and Safety

- NOTES: The overall energy efficiency and light distribution of any installation that uses these lamps are determined by the design of the installation.

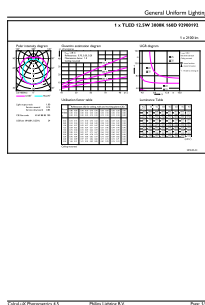
Dimensional drawing



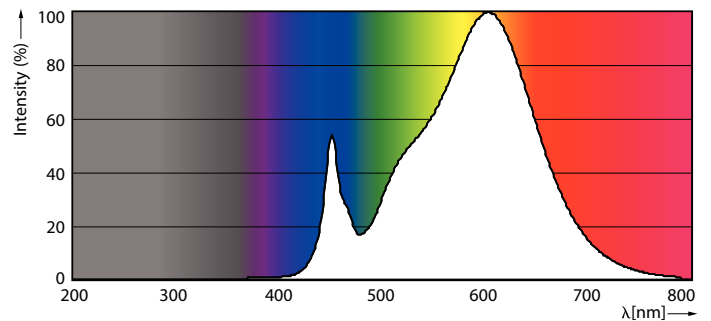
TLED master HE 2000lm12.35w 4ft 3000k

Product	D1	D2	A1	A2	A3
MASTER LEDtube 1200mm HO 12.5W 830 T8	25.8 mm	28 mm	1198.2 mm	1205.3 mm	1212.4 mm

Photometric data



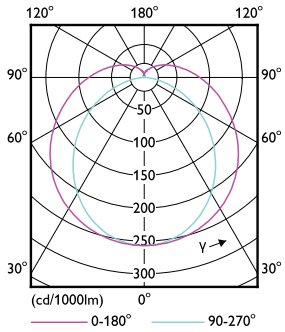
LEDtube MAS HO 12.5W G13 830 16D ND



LEDtube MAS HO 12.5W G13 830 16D ND

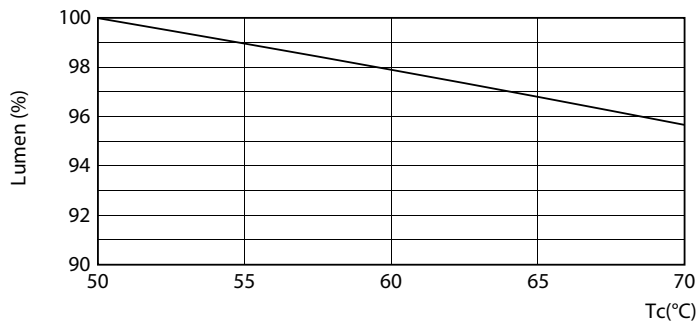
MASTER LEDtube EM/Mains T8

Photometric data

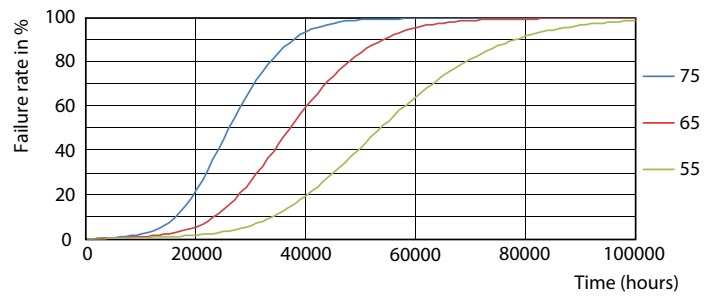


LEDtube MAS HO 12.5W G13 830 16D ND

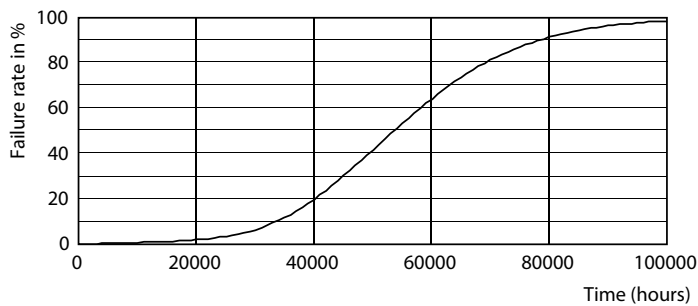
Lifetime



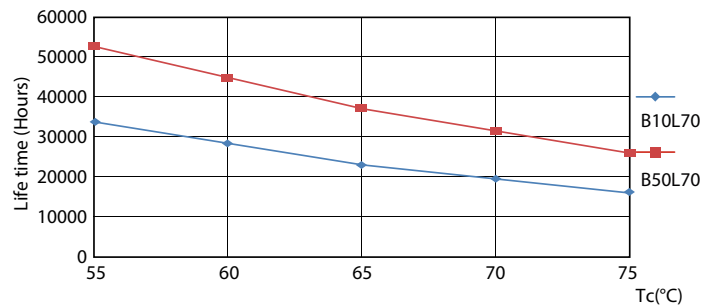
LEDtube MAS HO 12.5W G13 830 16D ND



LEDtube MAS HO 12.5W G13 830 16D ND



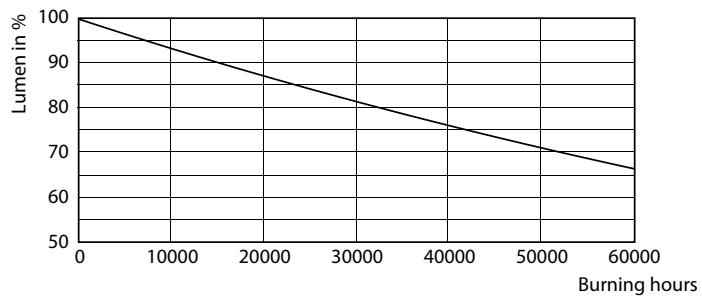
LEDtube MAS HO 12.5W G13 830 16D ND



LEDtube MAS HO 12.5W G13 830 16D ND

MASTER LEDtube EM/Mains T8

Lifetime



LEDtube MAS HO G13

