



# Pila LED tube 600mm 8W 840 G13

## Product data

### • General Characteristics

Cap-Base	G13 [ Medium Bi-Pin Fluorescent]
Main Application	Industrial
Nominal Lifetime (Nom)	25000 h
Switching Cycle	50000X
B50L70	25000 h

### • Light Technical Characteristics

Color Code	840 [ CCT of 4000K]
Beam Angle	240 °
Luminous Flux (Nom)	800 lm
Luminous Flux (Rated) (Nom)	800 lm
Rated Beam Angle	240 °
Correlated Color Temperature (Nom)	4000 K
Color consistency	<6
Color Rendering Index (Nom)	80
LLMF - end nominal lifetime	70 %

### • Electrical Characteristics

Input Frequency	50 to 60 Hz
Power (Rated) (Nom)	8 W
Lamp Current (Max)	74 mA
Starting Time (Nom)	0.5 s
Warm Up Time To 60% Light (Nom)	instant full light
Power Factor (Nom)	0.9
Voltage (Nom)	220-240 V

### • Temperature Characteristics

T-Ambient (Max)	45 °C
T-Ambient (Min)	-20 °C
T-Storage (Max)	65 °C
T-Storage (Min)	-40 °C
T-Case Maximum (Nom)	56 °C

### • Controls and Dimming

Dimmable	No
----------	----

### • Mechanical and Housing

Product Length	600 mm
----------------	--------

### • Approval and Application

Energy Saving Product	Yes
Suitable For Accent Lighting	No
Energy Efficiency Label (EEL)	A+
Approval Marks	CE marking RoHS compliance KEMA Keur certificate
Energy Consumption kWh/1000 h	8 kWh

### • Product Data

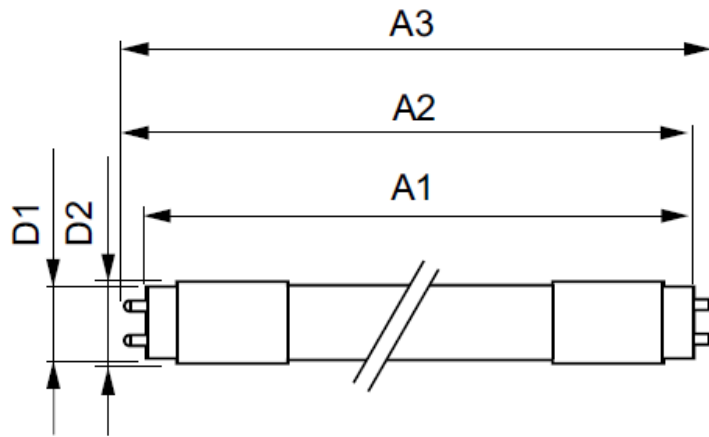
Full product code	871869673452000
Order product name	Pila LED tube 600mm 8W 840 G13
EAN/UPC - Product	8718696734520
Order code	929001173262
Numerator - Quantity Per Pack	1
Numerator - Packs per outer box	10
Material Nr. (12NC)	929001173262
Net Weight (Piece)	0.120 kg

## Warnings and Safety

- NOTES: The overall energy efficiency and light distribution of any installation that uses these lamps are determined by the design of the installation

## Dimensional drawing

Product	D1	D2	A1	A2	A3
Pila LED tube 600mm 8W 840 G13	25.68 mm	28 mm	588.5 mm	595.5 mm	602.5 mm



## Photometric data

