



F&F Filipowski sp. j.  
Konstytucyjowska 79/81 95-200 Pabianice  
phone/fax: (+48 42) 215 23 83 / 227 09 71 POLAND  
http://www.ff.com.pl e-mail: ff@ff.com.pl

ENERGY METER  
three-phase

LE-02d CT

**WARRANTY.** The F&F products are covered by a warranty of the 24 months from the date of purchase. Effective only with proof of purchase. Contact your dealer or directly with us. More information how to make a complaint can be found on the website: [www.ff.com.pl/reklamacje](http://www.ff.com.pl/reklamacje)



**Do not dispose of this device to a garbage bin with other unsorted waste!**  
In accordance with the Waste Electrical and Electronic Equipment Act any household electro-waste can be turned in free of charge and in any quantity to a collection point established for this purpose, as well as to the store in the event of purchasing new equipment (as per the old for new rule, regardless of brand). Electro-waste thrown in the garbage bin or abandoned in the bosom of nature pose a threat to the environment and human health.

**Purpose**

LE-02 CT is a static (electronic) indicator calibrated electricity three-phase alternating current system.

The indicator is designed to work with current transformers with primary current Ip from 5 ÷ 6000A and secondary current 5A. The maximum measured current is determined by the value of the primary current Ip current transformer used. You can set the index value of the gear used transformers, allowing you to identify the actual value taken by the electricity system.

**Functioning**

A special electronic system under the influence of current flow and applied voltage in each phase generates pulses in proportion to the electricity consumed in this phase. Phase energy consumption is indicated by flashing the corresponding LED (L1, L2, L3). The sum of the three phases of pulses indicated by a flashing LED is converted to energy taken in the entire three-phase system, and its value is determined by the segment LCD display.

Stored in the memory index values transformer primary current Ip possible to apply. Choosing the right value compatible with the values of external transformers automatically sets the correct ratio, which is calculated according to the actual value of the collected energy. The LCD displays the actual value of the energy consumed in the format depending on the selected gear.

- 1 -

**Pulse output**

The indicator has a pulse output SO+ SO-. This allows you to connect a pulse meter-reading (SO) pulses generated by the counter. For proper operation of the indicator is not required to connect additional devices. Constant pulse counter is 12000pulses/kWh for maximum input current meter, or the secondary current transformer (5A). When using a dedicated transformer the number of pulses per 1 kWh is calculated from the formula  $(12000 \times 5) / Ip$ , where:

Ip - primary current transformer used.

Example: for a transformer of 5 / 5A (Ip = 5):  $(12000 \times 5) / 5 = 12000 \text{ pulses / kWh}$   
for CT 100 / 5A (Ip = 100):  $(12000 \times 5) / 100 = 600 \text{ pulses / kWh}$

**Programming**

Transmission programmable using the button located under the lower casing meter terminals.



For safety reasons, the data logging function can make the gear set only once.

CT Current values Ip inscribed in memory device:

5, 25, 40, 50, 60, 75, 80, 100, 120, 150, 200, 250, 300, 400, 500, 600, 800, 1000, 1200, 1500, 1600, 2000, 2500, 3000, 4000, 5000, 6000.

Another pressing the programming button jumps to the next value.

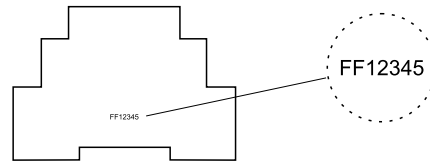
After switching to the desired value in order to confirm the selected value to hold the key >30s.

**Sealing**

The indicator has the possibility of sealing guards input and output terminals do to prevent circumvention of the counter.

**Counter number**

The meter is marked with an individual serial number to uniquely identify it. The marking is indelible (laser engraver).



- 2 -

**Assembly**

1. Disconnect the power supply.
2. The indicator mounted on a rail in the distribution box.
3. Using a screwdriver, remove the screws and remove the front shield meter terminals.
4. Connect the voltage-controlled phase, following the indications to terminals 1 (L1), 2 (L2), 3 (L3).
5. Connect the cable to the terminal N 4.
6. Transformers fasten on the phase conductors and secondary outputs connected in accordance with the indications to the terminals 10-9 (L1), 8-7 (L2), 6-5 (L3).



Do not tighten the clamps without the inserted wire. Doing so may damage the lift mechanism terminal or a plastic shield that terminal.

7. Additional pulse receiver connected to terminals 20(+) - 21(-). The terminals are located under the top shell meter terminals.  
NOTE! Additional pulse receiver is not required.
8. Pull the cap setting button transmission. Program indicator. Slide the cap.  
NOTE! The shell has a hole for safety seal assumption.
9. Install shield meter terminals.

**Technical data**

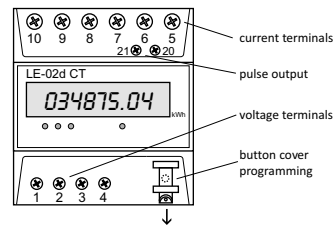
|  |                                   |
|--|-----------------------------------|
| reference voltage                      | 3x230/400V+N                      |
| base current                           | 3x1,5A                            |
| maximum current                        | 3x6A                              |
| secondary current transformer          | 5A                                |
| secondary minimum current              | 0,04A                             |
| accuracy in accordance (with IEC61036) | 1st class                         |
| own power consumption                  | <10VA; <2W                        |
| load current inputs                    | 0,4VA                             |
| number of characters LCD               | 8                                 |
| indication range                       | depending on the gear             |
| meter constant (for 5/5A)              | 12000 pulses/kWh                  |
| current consumption signal             | 3xred LED                         |
| read-out signalling                    | red LED                           |
| SO+ SO- pulse output                   | open collector                    |
| SO+ SO- connection voltage             | <30V DC                           |
| SO+ SO- current connection             | <27mA                             |
| SO+ SO- constant                       | depending on the gear             |
| SO+ SO- pulse time                     | 35ms                              |
| working temperature                    | -20÷55°C                          |
| terminal                               | screw terminals 16mm <sup>2</sup> |
| dimensions                             | 4,5 modules (75mm)                |
| mounting                               | on TH-35 rail                     |
| degree of protection                   | IP20                              |

- 3 -

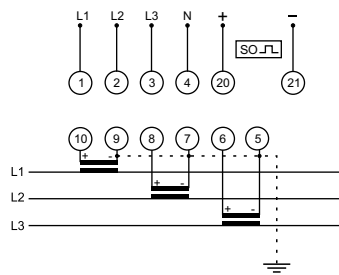
The method of projection data depending on the settings gear:

|           |  |
|-----------|--|
| Format    | Current Ip   |
| 000000.00 | 5; 25; 40; 50; 60;                                   |
| 0000000.0 | 75; 80; 100; 120; 150; 200; 250; 300; 400; 500; 600; |
| 00000000  | 800; 1000; 1200; 1500; 1600; 2000; 2500; 3000;       |
|           | 4000; 5000; 6000.                                    |

**I/O description**



**Wiring diagram**



D141028/141219

- 4 -