

PHILIPS

Lighting



HID ignitors for MK4 semi-parallel systems

SKD 578-S 220-240V 50/60Hz

HID ignitors for semi-parallel systems

Product data

General Information

Application Code	578-S
Lamp Type	SON/CDM/MH/HPI/HPA/CDO
Number Of Lamps	1 piece/unit

Operating and Electrical

Input Voltage	220 to 240 V
Input Frequency	50 to 60 Hz
Igniton Type	Semi-Parallel
Ignition Attempts	3
Number Of Ignition Pulses	1
Ignition Time (Max)	1185 s
Ignition Voltage (Max)	5.00 kV
Ignition Voltage (Min)	1.80 kV
Response Voltage	190 V
Mains Voltage Performance (AC)	-8%+6%
Mains Voltage Safety (AC)	-10%+10%
Power Losses (Nom)	0.5 W

Wiring

Wire Striplength	6.0 mm
Ballast Contact Wire Cross Section	0.50-2.50 mm ²

Connector Type	Screw
----------------	-------

System characteristics

Rated Ballast-Lamp Power	35-600 W
--------------------------	----------

Temperature

T-Ambient (Max)	85 °C
T-Ambient (Min)	-30 °C
T-Storage (Max)	85 °C
T-Storage (Min)	-35 °C
T-Case Maximum (Max)	90 °C

Approval and Application

Approval Marks	CE marking ENEC certificate
----------------	-----------------------------

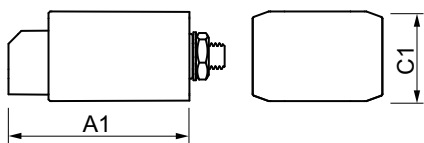
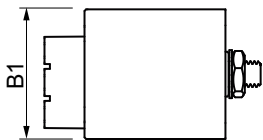
Product Data

Full product code	872790089569800
Order product name	SKD 578-S 220-240V 50/60Hz
EAN/UPC - Product	8711500881779
Order code	913700655466
Numerator - Quantity Per Pack	1
Numerator - Packs per outer box	20

HID ignitors for MK4 semi-parallel systems

Material Nr. (12NC)	913700655466
Net Weight (Piece)	31.400 g

Dimensional drawing



SKD 578-S 220-240V 50/60Hz

Product	A1	B1	C1
SKD 578-S 220-240V 50/60Hz	67.5 mm	40.5 mm	28.0 mm

