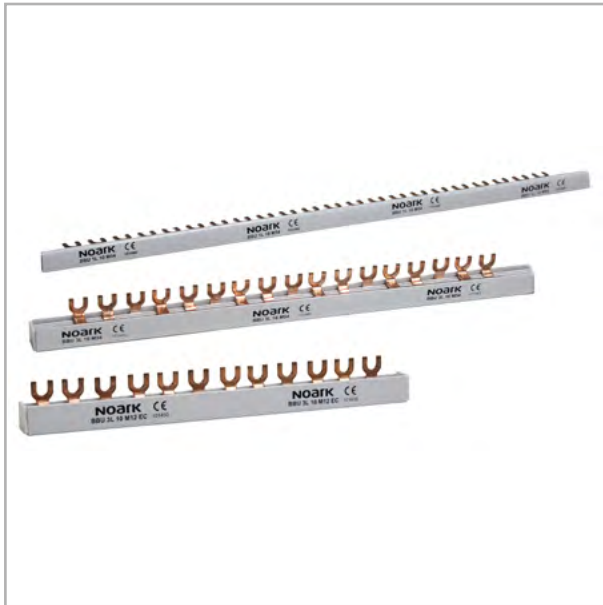


Busbars BBU and BBUE

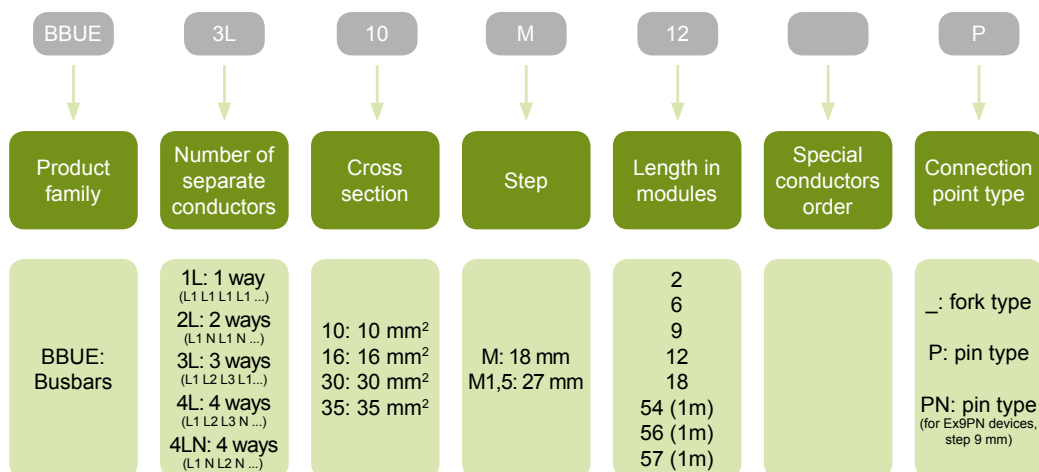


- Busbars BBU and BBUE for connection of installation devices
- 1, 2, 3 and 4-pole versions
- 10 mm² for 63 A, 16 mm² for 80 A and 35 mm² for 125 A circuits
- 1 meter long or shortened versions
- Fork and pin type connection points
- 9, 18 or 27 mm connection point step
- Tailored versions for specific combinations of Noark devices

Busbars for simple and reliable interconnection of installation devices.

Some versions equipped with end caps. There are available separately packed end caps for all types of busbars.

Type Key



Certification mark



Busbars BBU

1 meter BBU busbars

- 1 and 3-phase busbars
- With 54 fork type connection points
- 10 mm² for rated current up to 63 A
16 mm² for rated current up to 80 A
- Delivered without end caps



Number of phases	Length MU	Cross section	Article No.	Type	Packing
1	54 MU	10 mm ²	101446	BBU 1L 10 M54	1/100
1	54 MU	16 mm ²	101447	BBU 1L 16 M54	1/100
3	54 MU	10 mm ²	101448	BBU 3L 10 M54	1/50
3	54 MU	16 mm ²	101449	BBU 3L 16 M54	1/50

End caps for BBU busbars

- End caps for 1 and 3-phase BBU busbars



For busbars	For number of phases	Article No.	Type	Packing
BBU 1L	1	101452	ECU 1L	1/40000
BBU 3L	3	101453	ECU 3L	1/15000

Shortened BBU busbars

- 1 and 3-phase busbars
- With 12 fork type connection points
- 10 mm² for rated current up to 63 A
16 mm² for rated current up to 80 A
- Delivered with end caps

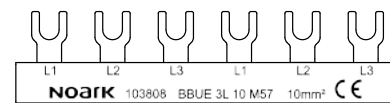


Number of phases	Length MU	Cross section	Article No.	Type	Packing
3	12 MU	10 mm ²	101450	BBU 3L 10 M12 EC	1/200
3	12 MU	16 mm ²	101451	BBU 3L 16 M12 EC	1/200

Busbars BBUE

1 meter fork type busbars

- 1, 2, 3 and 4-phase versions
- Length 1 meter (can be shortened)
- Step between connection points 18 mm
- Fork type connection points
- 10 mm² for 63 A or 16 mm² for 80 A rated current
- Delivered without end caps



Number of phases	Length MU	Cross section	Article No.	Type	Packing
1P	56 (1m)	10 mm ²	103798	BBUE 1L 10 M56	1/10
1P	56 (1m)	16 mm ²	103804	BBUE 1L 16 M56	1/10
2P	56 (1m)	10 mm ²	103864	BBUE 2L 10 M56	1/10
2P	56 (1m)	16 mm ²	103865	BBUE 2L 16 M56	1/10
3P	57 (1m)	10 mm ²	103808	BBUE 3L 10 M57	1/10
3P	57 (1m)	16 mm ²	103812	BBUE 3L 16 M57	1/10
4P	56 (1m)	10 mm ²	103816	BBUE 4L 10 M56	1/10
4P	56 (1m)	16 mm ²	103817	BBUE 4L 16 M56	1/10

Shortened fork type busbars

- 1 and 3-phase versions
- 10 mm² for 63 A or 16 mm² for 80 A rated current
- Step between connection points 18 mm
- Fork type connection points
- Delivered without end caps

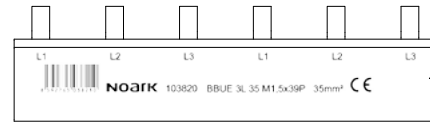


Number of phases	Length MU	Cross section	Article No.	Type	Packing
1	2	10 mm ²	103799	BBUE 1L 10 M2	1/25
1	6	10 mm ²	103800	BBUE 1L 10 M6	1/25
1	9	10 mm ²	103801	BBUE 1L 10 M9	1/25
1	12	10 mm ²	103802	BBUE 1L 10 M12	1/25
1	12	16 mm ²	103805	BBUE 1L 16 M12	1/25
1	18	10 mm ²	103803	BBUE 1L 10 M18	1/25
1	18	16 mm ²	103806	BBUE 1L 16 M18	1/25
3	9	10 mm ²	103809	BBUE 3L 10 M9	1/25
3	9	16 mm ²	103813	BBUE 3L 16 M9	1/25
3	12	10 mm ²	103810	BBUE 3L 10 M12	1/25
3	12	16 mm ²	103814	BBUE 3L 16 M12	1/25
3	18	10 mm ²	103811	BBUE 3L 10 M18	1/25
3	18	16 mm ²	103815	BBUE 3L 16 M18	1/25

Busbars BBUE

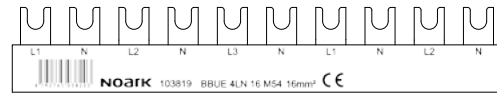
Special type busbars

- 1, 3 and 4-phase versions
- Suitable for Ex9B125 line MCBs
- For rated current up to 125 A
- Step between connection points 27 mm
- Pin type connection points
- Delivered without end caps



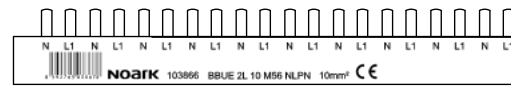
Number of phases	Length MU	Cross section	Article No.	Type	Packing
1	37 (1m)	35 mm ²	103807	BBUE 1L 35 M1,5x37P	1/10
3	39 (1m)	35 mm ²	103820	BBUE 3L 35 M1,5x39P	1/10
4	40 (1m)	30 mm ²	103821	BBUE 4L 30 M1,5x40P	1/10

- 4-phase busbars - configuration L1 N L2 N L3 N L1 ...
- Suitable for 2MU 1P+N-pole MCBs line Ex9B
- 10 mm² for rated current up to 63 A
- 16 mm² for rated current up to 80 A
- Step between connection points 18 mm
- Fork type connection points
- Delivered without end caps



Number of phases	Length MU	Cross section	Article No.	Type	Packing
4	54 (1m)	10 mm ²	103818	BBUE 4LN 10 M54	1/10
4	54 (1m)	16 mm ²	103819	BBUE 4LN 16 M54	1/10

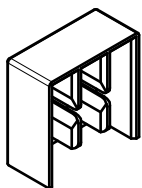
- 2-phase busbar - configuration N L1 N L1 N ...
- Suitable for 1MU 1P+N-pole MCBs line Ex9PN
- 10 mm² for rated current up to 63 A
- Step between connection points 8.7 mm
- Pin type connection points
- Delivered without end caps
- Busbar is designed for connection to devices from the bottom side, order of devices is quoted from left



Number of phases	Length MU	Cross section	Article No.	Type	Packing
2	56 (1m)	10 mm ²	103866	BBUE 2L 10 M56 NLPN	1/10

End Caps

- End Caps for BBUE busbars

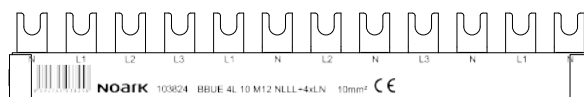


For Busbars	For Number of phases	Article No.	Type	Packing
BBUE 1L	1	103826	ECUE 1L	1/50
BBUE 2L	2	103827	ECUE 2L	1/50
BBUE 3L	3	103828	ECUE 3L	1/50
BBUE 4L	4	103829	ECUE 4L	1/50
BBUE 1L 35	1	103831	ECUE 1L 35	1/50
BBUE 3L 35	3	103830	ECUE 3L 35	1/50

Busbars BBUE

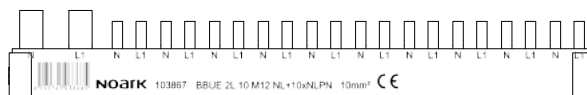
Special type shortened busbars

- 2 and 4-phase busbars for combination of Ex9CL RCCB with 1P+N-pole Ex9B line MCBs
- 10 mm² for rated current up to 63 A
- Step between MCB connection points 18 mm
- Fork type connection point
- Delivered with end caps
- Busbar is designed for connection to devices from the bottom side, order of devices is quoted from left



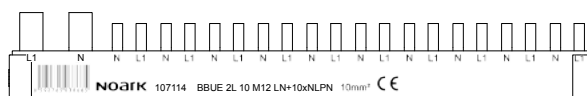
Number of phases	Length MU	Cross section	Article No.	Type	Packing
2	12	10 mm ²	103868	BBUE 2L 10 M12 NL+5xLN	1/25
4	12	10 mm ²	103824	BBUE 4L 10 M12 NLLL+4xLN	1/25
4	18	10 mm ²	103825	BBUE 4L 10 M18 NLLL+7xLN	1/25

- 2 and 4-phase busbars for combination of Ex9CL RCCB with Ex9PN line MCBs
- 10 mm² for rated current up to 63 A
- Step between MCB connection points 8.7 mm
- Pin type connection points
- Delivered with end caps
- Busbar is designed for connection to devices from the bottom side, order of devices is quoted from left



Number of phases	Length MU	Cross section	Article No.	Type	Packing
2	12	10 mm ²	103867	BBUE 2L 10 M12 NL+10xNLPN	1/25
4	12	10 mm ²	103822	BBUE 4L 10 M12 NLLL+8xNLPN	1/25

- 2-phase busbar for combination of RCCB of line Ex9CBL and Ex9PN line MCBs
- 10 mm² for rated current up to 63 A
- Step between MCB connection points 8.7 mm
- Pin type connection point
- Delivered with end caps
- Busbar is designed for connection to devices from the bottom side, order of devices is quoted from left

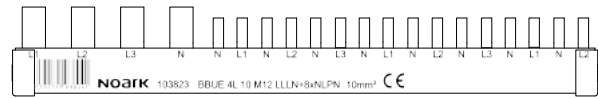


Number of phases	Length MU	Cross section	Article No.	Type	Packing
2	12	10 mm ²	107114	BBUE 2L 10 M12 LN+10xNLPN	1/25

Busbars BBUE

Special type shortened busbars

- 4-pole busbar for combination of RCD with N-pole on right hand side and Ex9PN line MCBs
- 10 mm² for rated current up to 63 A
- Step between MCB connection points 8.7 mm
- Pin type connection point
- Delivered with end caps
- Busbar is designed for connection to devices from the bottom side, order of devices is quoted from left



Number of phases	Length MU	Cross section	Article No.	Type	Packing
4	12	10 mm ²	103823	BBUE 4L 10 M12 LLLN+8xNLPN	1/25

Protection covers for busbars

- Protection covers for unused connection points on BBUE busbars
- 5 pieces connected together, breakable



Cover type	Cross section	Colour	Article No.	Type	Packing
L-type	10/16 mm ²	yellow	105728	SPBB1	5/50

- suitable for 1-phase (103798, 103799, 103800, 103801, 103802, 103803, 103804, 103805, 103806), 2-phase (103864, 103865) and 4-phase (103816, 103817, 103818, 103819) busbars



Roof-type	10/16 mm ²	yellow	105729	SPBB2	5/50
-----------	-----------------------	--------	--------	-------	------

- suitable for 3-phase (103808, 103809, 103810, 103811, 103812, 103813, 103814, 103815) busbars



L-type	30/35 mm ²	yellow	105730	SPBB3	5/50
--------	-----------------------	--------	--------	-------	------

- suitable for 30 and 35 mm² (103807, 103820, 103821) busbars

Technical Data BBU and BBUe

Busbars BBU and BBUe

General parameters

1, 2, 3 and 4-phase busbars

Length 1 meter (can be shortened) or shortened versions (2, 6, 9, 12, 18 modules)

Special type busbars are designed for connection to devices from the bottom side, order of devices is quoted from left

Electrical parameters

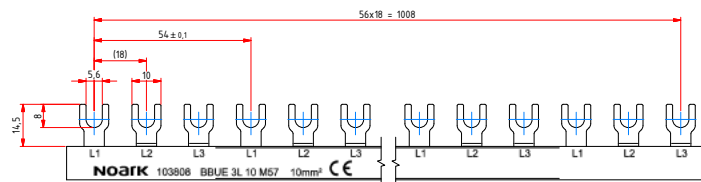
Tested according to	EN 60439-1
Rated operation voltage U_e	230 / 400 V AC
Rated current I_e	63 A (10 mm ²), 80 A (16 mm ²), 125 A (30/35 mm ²)
Rated frequency f	50 Hz
Rated impulse withstand voltage U_{imp}	4 kV (BBU) 8 kV (BBUE 35), 6 kV (BBUE)

Mechanical parameters

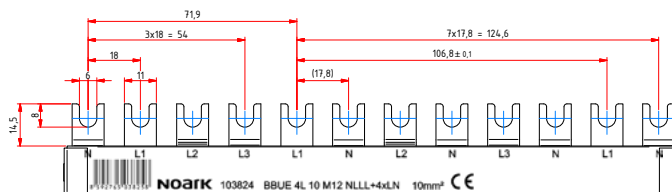
Busbar cross section	10 / 16 / 30 / 35 mm ²
Connection point type	Fork or Pin
Connection point step	8.7 mm / 18 mm / 27 mm

Dimensions

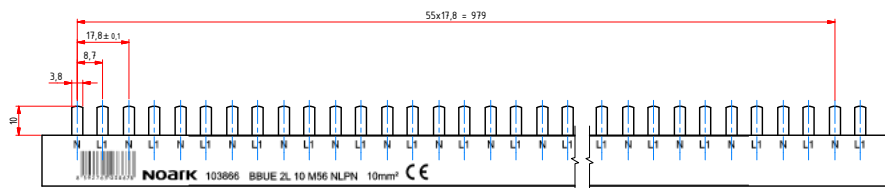
Fork types



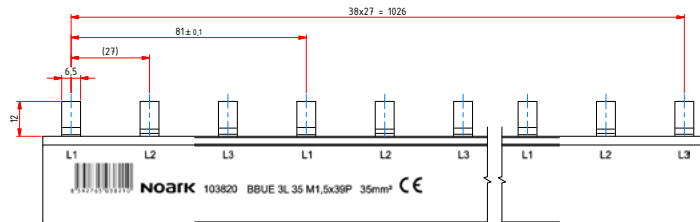
4LN fork types



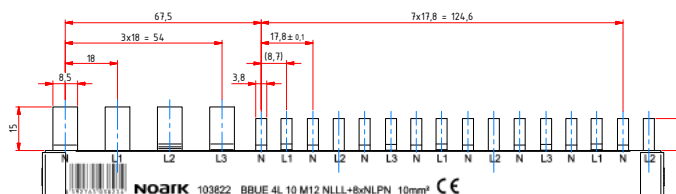
Pin types



35 mm² pin types



Device combination types

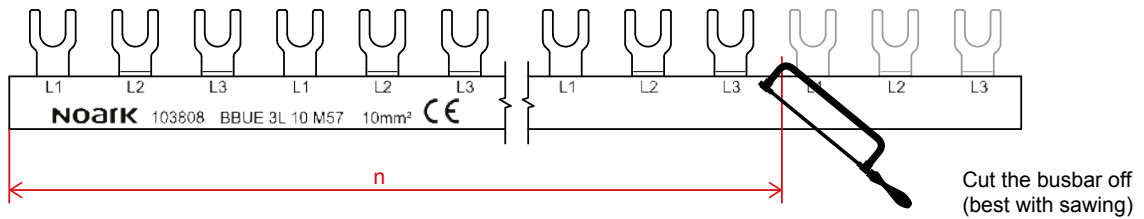


Technical Data BBU and BBUE

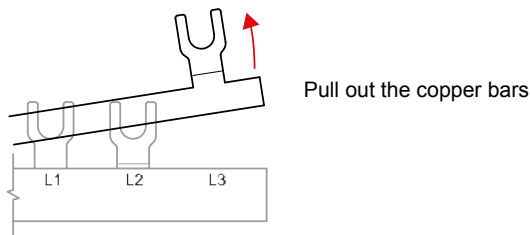
Busbars BBU and BBUE

Shortening

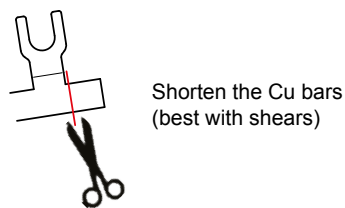
1)



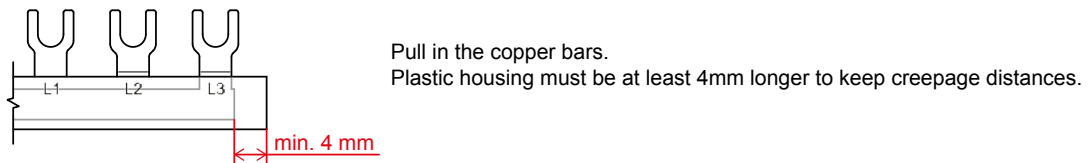
2)



3)



4)



5)

